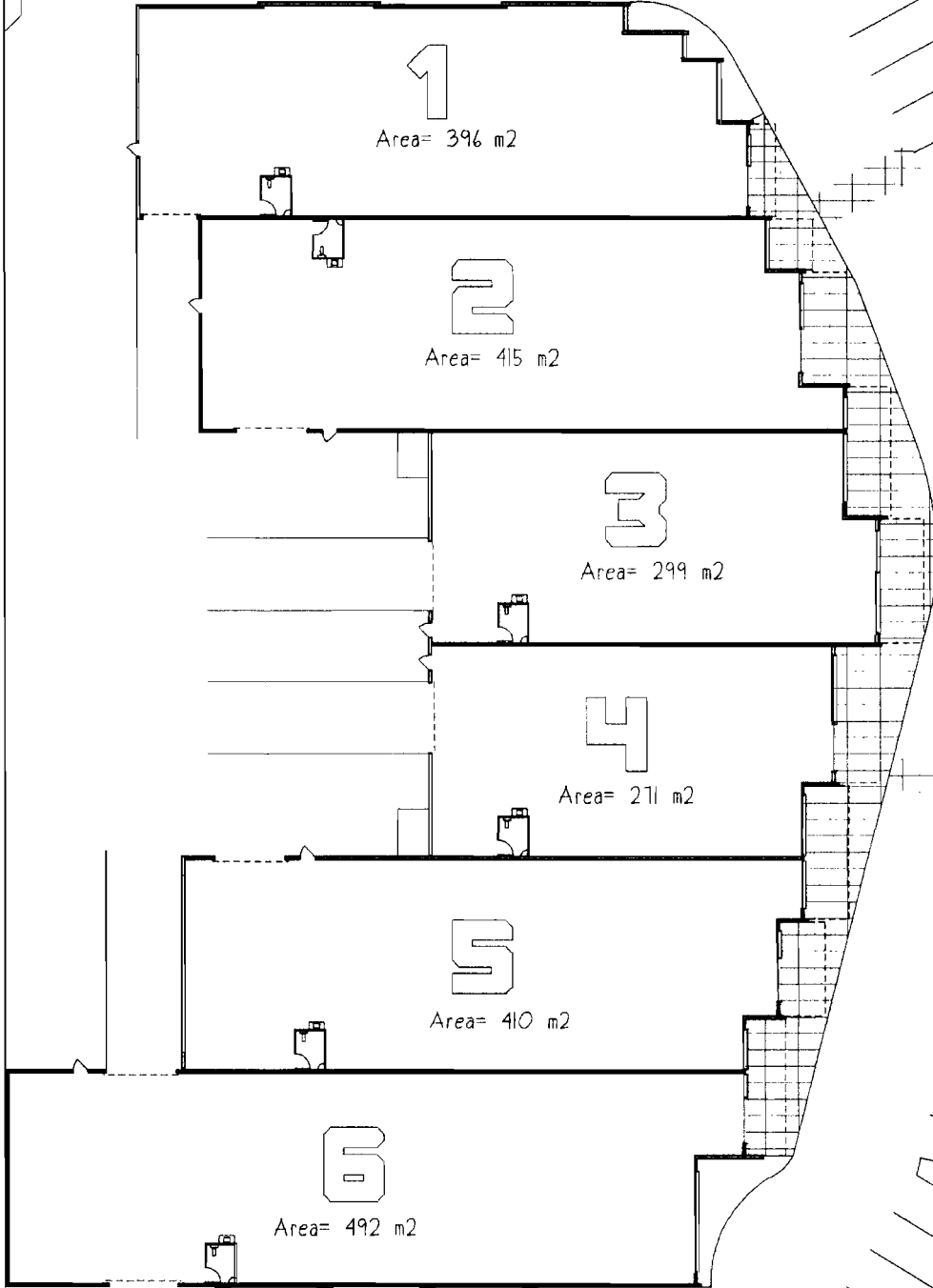


Area= 15 m<sup>2</sup>



1

Area= 396 m<sup>2</sup>

2

Area= 415 m<sup>2</sup>

3

Area= 299 m<sup>2</sup>

4

Area= 211 m<sup>2</sup>

5

Area= 410 m<sup>2</sup>

6

Area= 492 m<sup>2</sup>

